



# DE'S TECHNICO LIMITED

ISO 9001:2015

ISO 14001:2015

ISO 14001:2015

FIRE का DOCTOR



# FIRE KA DOCTOR

# TRUSTED FIRE SAFETY EXPERTS FOR OVER 35 YEARS

## ESTABLISHED: 1988

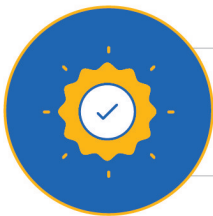
De's Technico Company is India's first fire detection and protection system company with a QMS-certified integrated management system, compliant with the latest updates of ISO 9001:2015, ISO 14001:2015, and ISO 45001:2018.

Led by our technical expert, Dr. Pulak De, an IIT Kharagpur alumnus, we bring over four decades of industrial experience to the table. Our team, comprised of highly qualified professionals from IIT, specializes in executing Lump Sum Turnkey (LSTK) projects across various industrial sectors.

We ensure excellence by adhering to NFPA codes, TAÇ, and OISD approvals, tailored to each environment.

## CORE COMPETENCIES

- ◆ System Integration, Design, Engineering, Procurement, Manufacturing, Installation and Commissioning of high hazard sectors.
- ◆ Installing Automatic Fire, Gas & Flame Detection and Protection Systems on a single window responsibility basis.



**PRODUCTS VETTED BY  
TAC, EIL, PDIL, BVIS, DNV,  
RITES, GLL, TUV, TOYO ETC**



**WORKING WITH ONGC,  
INDIAN OIL, BHEL & MANY  
MORE**



**FACTORY WITH 2 UNITS  
OF 48,000 SQ. FT. AND  
30,000 SQ. FT. EACH.**

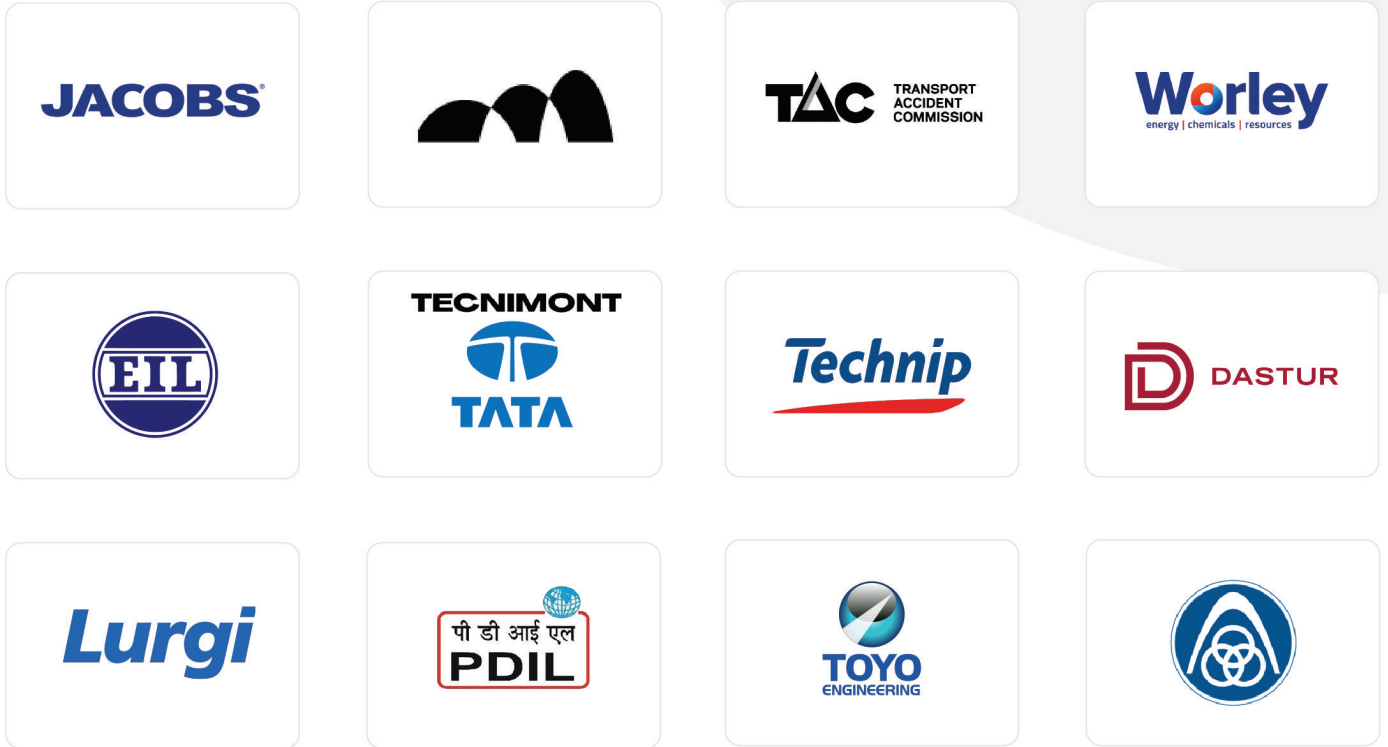


**IN-HOUSE TESTING  
FACILITIES**



# RECOGNIZED EXCELLENCE

## DESIGNS AND EXECUTIONS APPROVED BY



## AWARDS



# IGNITING SAFETY, EXTINGUISHING FIRE

Delivering state-of-the-art fire protection systems engineered to safeguard your assets and ensure uninterrupted operations.

## DELUGE VALVE

Deluge Valve is the main control valve in Water based Automatic Fire Protection Systems. It is a special purpose valve meant for use in extra high hazard area with rapidly spreading fire, protected by Medium Velocity & High Velocity Water Spray Systems and all Sprinkler Systems of Pre- action and Deluge type and large Foam Systems.



### DELUGE VALVE CAST CARBON STEEL MODEL PD-CS



- MOC- Cast Carbon Steel (ASTM A 216 GR. WCB) body with stainless steel top cover
- Rated pressure 17.5 Bar (250 PSI)
- Vertical inlet & horizontal outlet
- Stainless steel/ Bronze Seat



### DELUGE VALVE ALUMINIUM BRONZE MODEL PD-AB



- Aluminium Bronze.
- Pressure rating 17.5 Bar (250 PSI)
- Vertical inlet and Horizontal Outlet
- Stainless Steel (SS 316)/Bronze Seat
- Can be used as Flangeless & Flanged end.
- UL Listed
- Piston Operated Piston Operated with rubber sealing. It is therefore Robust.
- 5 years Warranty
- Less maintenance Cost
- No special tools required for Commissioning
- Auto-reset type
- Sizes available 3", 4", 6" & 8"



### DELUGE VALVE CAST STAINLESS STEEL MODEL PD-SS



- Stainless Steel- SS 316 (ASTM A 351CF8M) / SS 304 (ASTM A 351CF8)
- Pressure rating 17.5 Bar (250 PSI)
- Vertical inlet and horizontal Outlet
- Stainless Steel Seat



### DELUGE VALVE CABINET



- Comes with three number high performance butterfly valves and bypass system.
- Include pressure switch, pressure gauge, SOV, JB and internal wiring.
- Professionally pre-assembled and factory tested.
- Aesthetically pleasing appearance.
- All gauges are externally visible.
- Use 14 SWG sheet with red powder coating.



### FOAM BLADDER TANK (HORIZONTAL)



The DTL bladder tank, together with DTL ratio controllers, form a balanced Pressure Proportioning System used to mix water and firefighting foam together to generate an effective extinguishing medium. The DTL bladder tank is a steel pressure vessel which stores a foam concentrate contained within an elastomeric bladder.

- 5 years Warranty & Hazzle Free Maintenance.
- Rubber's Shrinkage / expansion does not create damage,
- Re-fill and re-use as many times as you wish without a worry.
- Filling Foam is Very Simple From the Top or Bottom.
- Available up to 15,000 Ltr, both Horizontal & Vertical.

# NOZZLES

Foreign/solid-free clear water enters the nozzle at the rated pressure & passes through the nozzle chamber to impinge on the deflector. This impingement breaks the water jet into macro particles, creating a conical spray at a pre-designed angle & medium velocity, as determined by the deflector. The flow at the specified pressure is determined by the K-factor of the design, which is pre-designed.



## MVWS NOZZLE (BRASS)



- Type: Air Aspirating type Open Type (Non-Automatic)
- Thread: 1/2 " NPT (M) [BSPT also available on demand]
- Maximum operating pressure: 12 kg/cm<sup>2</sup>
- Working Pressure: 1.4 to 3.5 kg/cm<sup>2</sup>
- Hydrotest Pressure: 15 kg/cm<sup>2</sup> for 5 min.
- Approval: UL Listed
- K Factor: 18, 22, 30, 35, 41, 51, 64, 79, 102
- Spray Angle: 120° & 140°
- Material: Stainless Steel/Bronze



## MVWS NOZZLE (BRASS- ALUMINUM BRONZE)



- Type: Air Aspirating type Open Type (Non-Automatic)
- Thread: 1/2 " NPT (M) [BSPT also available on demand]
- Maximum operating pressure: 12 kg/cm<sup>2</sup>
- Working Pressure: 1.4 to 3.5 kg/cm<sup>2</sup>
- Hydrotest Pressure: 15 kg/cm<sup>2</sup> for 5 min.
- Approval: UL Listed
- K Factor: 18, 22, 30, 35, 41, 51, 64, 79, 102
- Spray Angle: 120° & 140°
- Material: Brass(Aluminum Bronze)



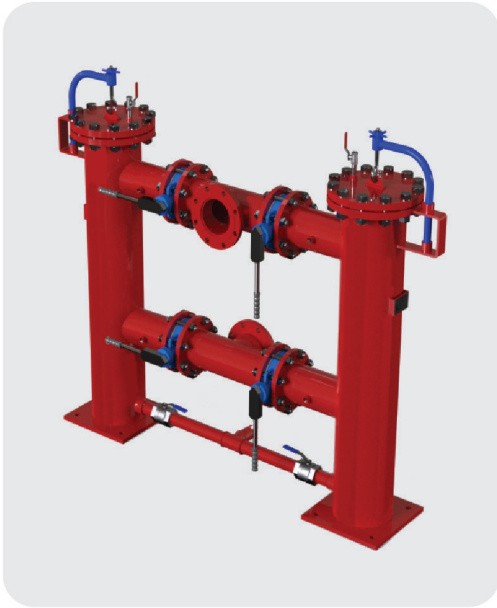
## FOAM NOZZLE



- Type: Air Aspirating type
- Thread: 1/2" NPT(M) [BSPT also available on demand]
- Working Pressure: 2.1 to 12.1 kg/cm<sup>2</sup>
- K Factor: 42.2
- Material: Stainless Steel
- Design for foam water sprinkler system, rim seal system.
- Approval: UL Listed
  - Available in multiple MOC's
  - UL Listed
- 5 Years Warranty
- We maintain huge stock for fast delivery

# STRAINER

A pipeline strainer is a device which provides a means of mechanically removing of un dissolved solids from a flowing fluid by utilizing a perforated, mesh or wedge wire straining element. The most common range of strainer particle retention is 1 inch to 40 micron (.00156 inch).



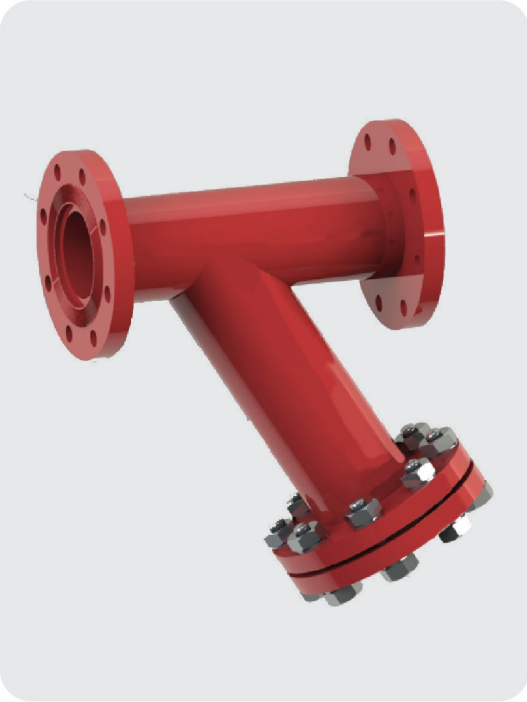
## FABRICATED DUPLEX STRAINER

- Available Size: 50Nb to 300 Nb.
- Rating: ASME Class 150 to 300
- Connection Type: Flanged /Welded/Grooved
- Flange type: SORF/WNRF
- Strainer body: IS: 2062/SA 516 Gr. 70/A 106/SS
- Element: SS 316 / Duplex Steel
- Element design: UL 331
- Flange: IS: 2062/ A 105 /SS
- Bolt & Nut: Carbon Steel / SS



## FABRICATED BASKET STRAINER

- Available Size: 50Nb to 2000 Nb.
- Rating: ASME Class 150 to 2500
- Connection Type: Flanged /Welded/Grooved
- Flange type: SORF/WNRF
- Strainer body: IS: 2062/SA 516 Gr.70/A 106/SS
- Element: SS 316 / Duplex Steel
- Element design: UL 331
- Flange: IS: 2062/ A 105 /SS
- Bolt & Nut: Carbon Steel / SS



### STRAINER FABRICATED Y-STRAINER

- Available Size: 25Nb to 600 Nb. (can be customized to conform Customer requirement)
- Rating: ASME Class 150 to 2500
- Connection Type: Flanged /Welded/Grooved
- Flange type: SORF/WNRF
- Strainer body: IS: 2062/SA 516 Gr. 70/A 106 /SS
- Element: SS 316 / Duplex Steel
- Element design: UL 331
- Flange: IS: 2062/ A 105 /SS
- Bolt & Nut: Carbon Steel / SS



### FABRICATED T-STRAINER

- Available Size: 50Nb to 2000 Nb.
- Rating: ASME Class 150 to 600
- Connection Type: Flanged /Welded/Grooved
- Flange type: SORF/WNRF
- Strainer body: IS: 2062/SA 516 Gr. 70/A 106/ ASTM A234 WPB/SS
- Element: SS 316 / Duplex Steel
- Element design: UL 331
- Flange: IS: 2062/ A 105/SS
- Bolt & Nut: Carbon Steel / SS
- Available up to 1500 NB Size
- 5 Years Warranty
- Cost effective and easy to install.
- Professionally pre-assembled and factory tested.
- Finished with red color (can be customized to conform Customer requirement)
- Aesthetically pleasing appearance.
- Long lasting & easy to maintenance
- Filtration down to 10- 40 microns

# FOAM EQUIPMENTS



## FOAM MAKER



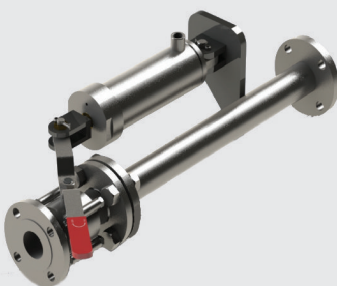
- Applicable for Floating Roof Tank.
- Suitable for all types of Foam Concentrate.
- Inlet Size: 50,65 & 80 Nb
- Working Pressure: 2.8 to 7 Kg/cm<sup>2</sup>
- Maximum back Pressure: 1 PSI.
- 3 to 4% Foam Expansion.
- Material: Carbon Steel with anticorrosive coating /SS 304/ SS 316
- Flange: SORF, ASME B 16.5,150LBS, A105/ SS 304/ SS 316, MOC- A105



## FOAM POURER - FLOATING ROOF TANK



- Applicable for Floating Roof Tank.
- Suitable for all types of Foam Concentrate.
- Inlet Size: 50,65 & 80 Nb
- Working Pressure: 2.8 to 7 Kg/cm<sup>2</sup>
- Maximum back Pressure: 1 PSI.
- 3 to 4% Foam Expansion.
- Material: Carbon Steel with anticorrosive coating /SS 304/ SS 316.
- Flange:SORF, ASME B 16.5,150LBS, A105/ SS 304/ SS 316 MOC- A105



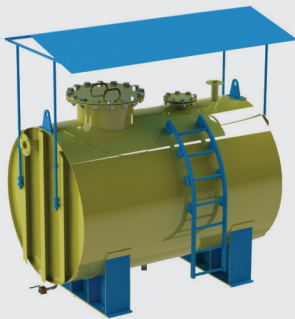
## HOV- HYDRAULIC OPERATED VALVE



- Applicable with Foam Bladder Tank/ Atmospheric Tank.
- Auto open - Manual close
- Low Operating Pressure.
- Inlet Size: 40 & 50 Nb
- Material: SS.
- Connection: Flange
- Flange: SORF, ASME B 16.5, SS



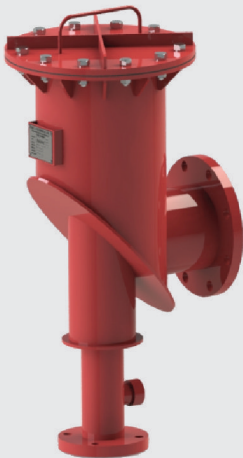
### FOAM CONCENTRATE TANK



- Type: Horizontal
- Capacity: 200 Ltr. to 10000 Ltr. (Larger tanks are available on special request)
- Working Pressure: Atmospheric
- Design & Hydrotest: IS:10987
- Tank Material: SS/ Carbon Steel with FRP coating.
- Pipe: SS
- Flange: SORF, ASME B 16.5, SS
- Bladder Tank filling kit & Hydraulic Operated Valve (Provided on request)



### FOAM CHAMBER



- Applicable for Fixed Roof Tank.
- Suitable for all types of Foam Concentrate.
- Inlet Size: 50,65,80,100 & 150 Nb
- Maximum back Pressure: 1 PSI.
- Vapour Seal: Glass.
- 3 to 4% Foam Expansion.
- Material: Carbon Steel with anticorrosive coating /SS 304/ SS 316
- Flange: SORF, ASME B 16.5, 150LBS, A105/ SS 304/ SS 316, MOC- A105.



### MEDIUM EXPANSION FOAM GENERATOR



- MOC- Inlet Flange (ANSI B 16.5 / IS: 1538) SS / CARBON STEEL
- MOC- Shell SS / GI
- MOC - Nozzle SS / BRASS / GM
- MOC -Foam Screen SS
- MOC - Support CARBON STEEL

# COMPLETE FIRE SYSTEM PROVIDER FOR TOTAL SAFETY

## FOAM SYSTEM



## RIM SEAL FIRE PROTECTION SYSTEM



**HYDRANT SYSTEM**



**CLEAN AGENT SYSTEM**



**MVWS SYSTEM**



**HVWS SYSTEM**



**CO<sub>2</sub> SYSTEM**



**FDA SYSTEM**



# PROJECTS

**INSULATION**



**COMPOSITE**



**STRUCTURAL**



**PRODUCT PIPELINE**



**EQUIPMENT ERECTION**



ةدودحمالا وكنك زىد  
DE'S TECHNICO LIMITADA  
德的技術有限的  
DE'S TECHNICO LIMITÉE

DE'S  
TECHNICO  
LIMITED



**DE'S TECHNICO LIMITED**

ةدودحمالا وكنك زىد  
DE'S TECHNICO LIMITADA  
德的技術有限的  
DE'S TECHNICO LIMITÉE



**CALL US**

+91 33 4042 6969 | +91 92306 13304



**LOCATE US**

Martin Burn Business Park,  
Sector V, Kolkata, West Bengal 700091



**WRITE US**

ho@dtplindia.in  
caldtpl@gmail.com

[WWW.DTPLINDIA.IN](http://WWW.DTPLINDIA.IN)